

# Turn and Find - Blue - Instructions 1:

(4 page never-ending folding card)

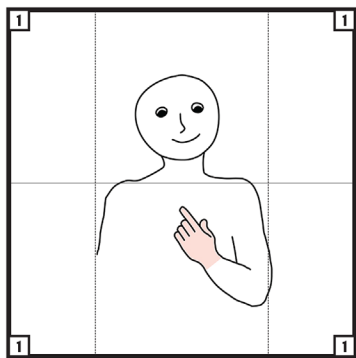
You will need:

- 4 sheets of card stock (8.5" x 11")
- glue stick
- scissors

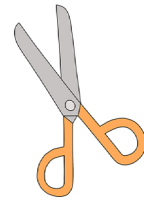
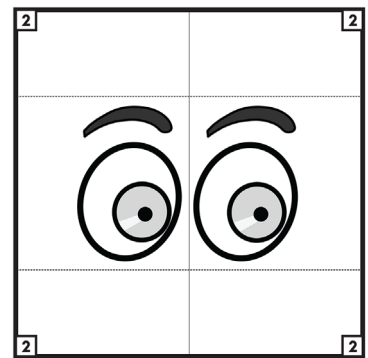
Steps:

- 1 - Print the four pages that follow the instructions.
- 2 - Cut out each page square.
- 3 - Cut each page square in half along the cutting line.

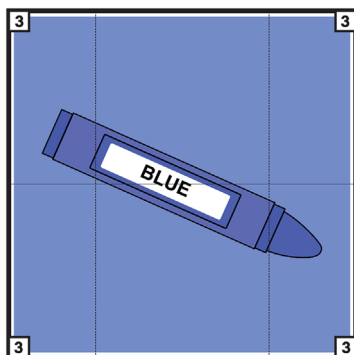
Page 1



Page 2



Page 3



Page 4



# Turn and Find - Blue - Instructions 2:

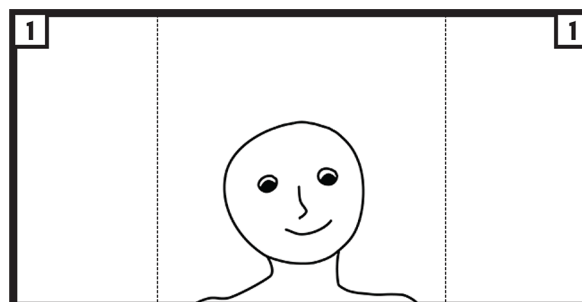
(4 page never-ending folding card)

Steps:

4 - Fold the ends of each half square (Page 1) in along the fold lines.

5 - Repeat for all other pieces (Page 2, Page 3, Page 4).

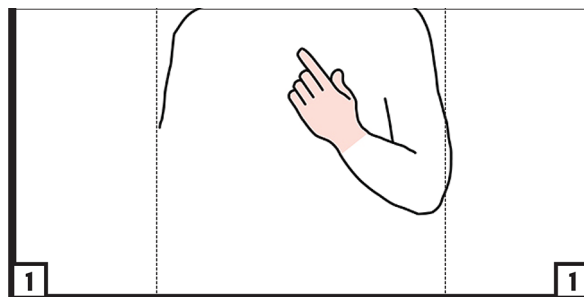
Page 1  
Top



↑  
*Fold*

↑  
*Fold*

Page 1  
Bottom



↑  
*Fold*

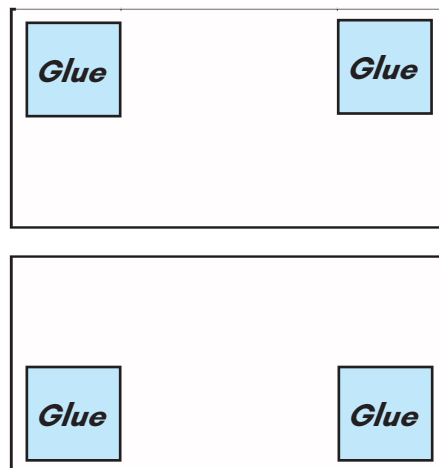
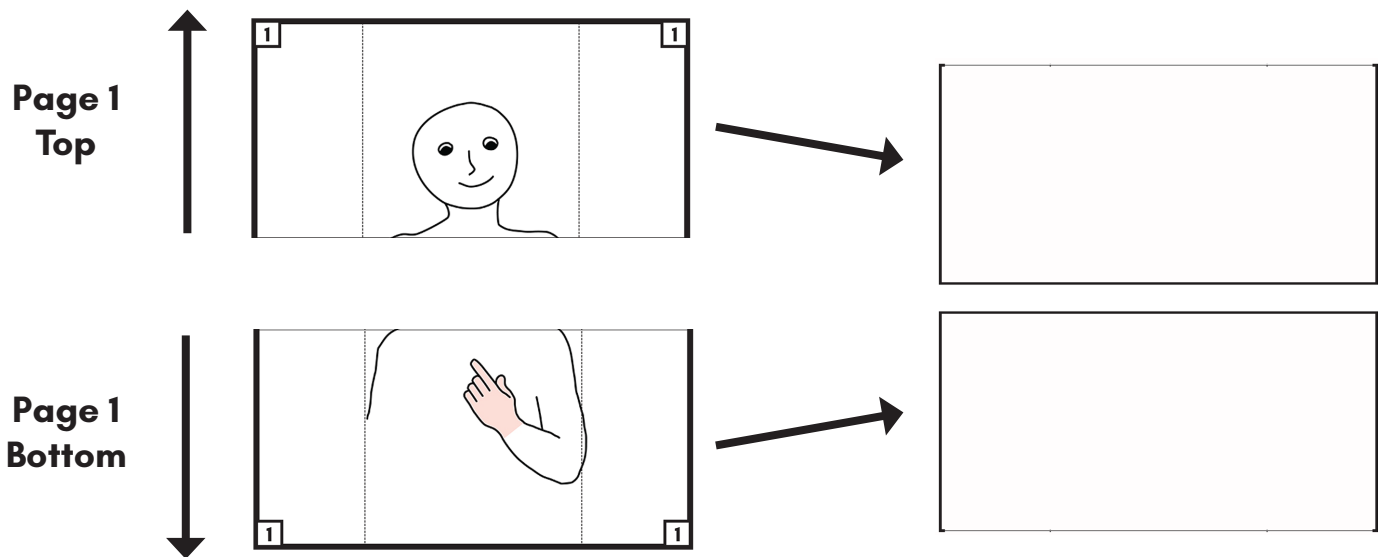
↑  
*Fold*

# Turn and Find - Blue - Instructions 3:

(4 page never-ending folding card)

## Steps:

- 6 - Place Page 1 parts (top and bottom) face up (numbers in outside corners).
- 7 - Turn the top of Page 1 up and over (face down).
- 8 - Turn the bottom of Page 1 down and over (face down).
- 9 - Bring the upside down pieces close together.
- 10 - Put glue on the 4 corners.



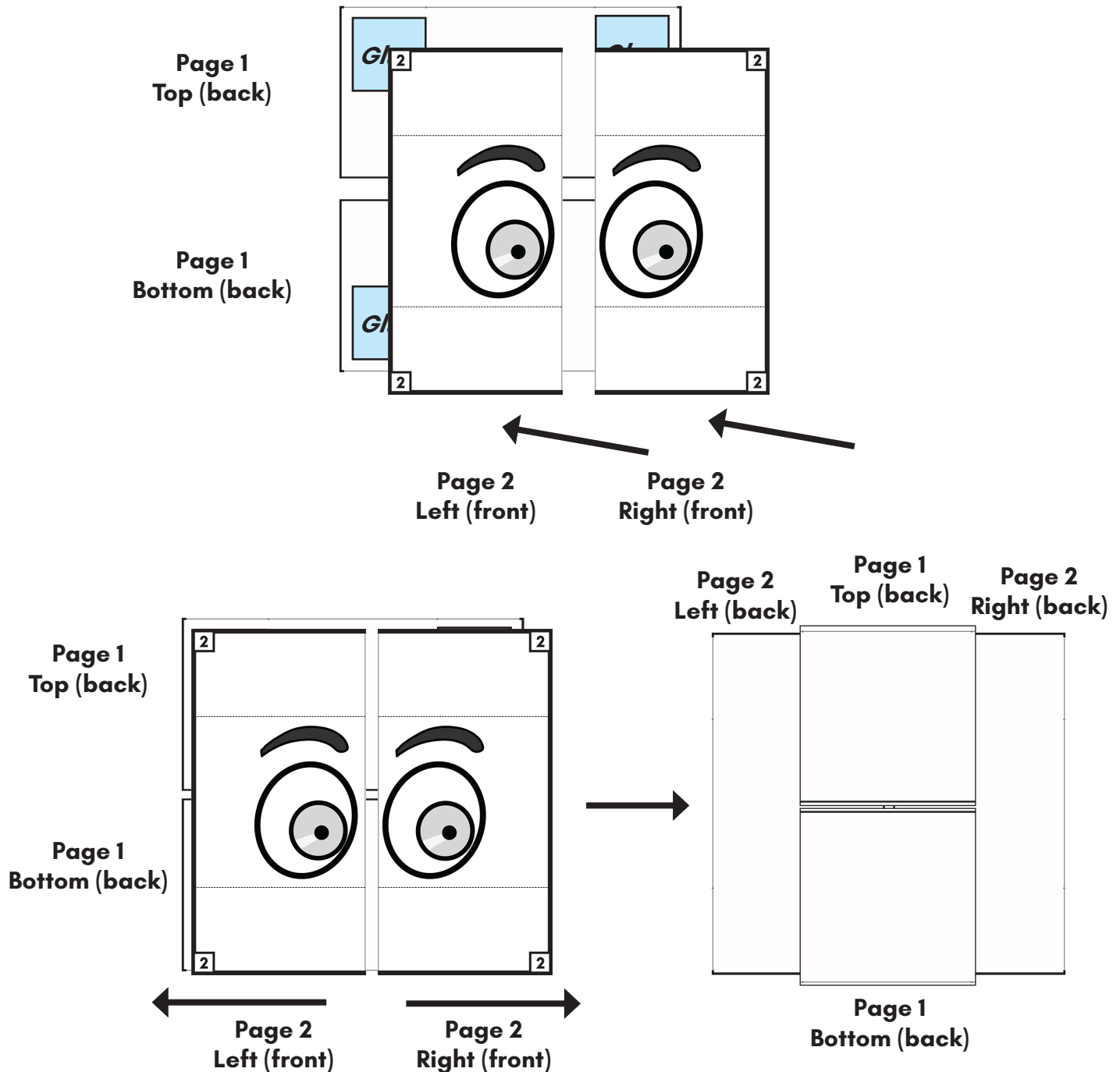
# Turn and Find - Blue - Instructions 4:

(4 page never-ending folding card)

## Steps:

11 - Place Page 2 pieces (left and right) on the glue (face up / numbers right side up in the outside corners).

12 - Turn the page 2 pieces (left and right) out, over, and under (face down) along the fold lines.



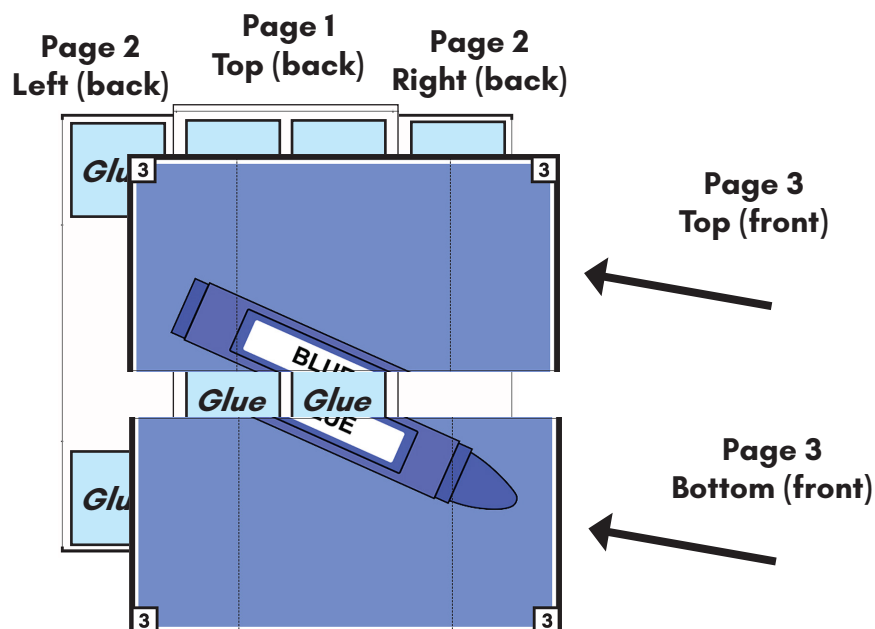
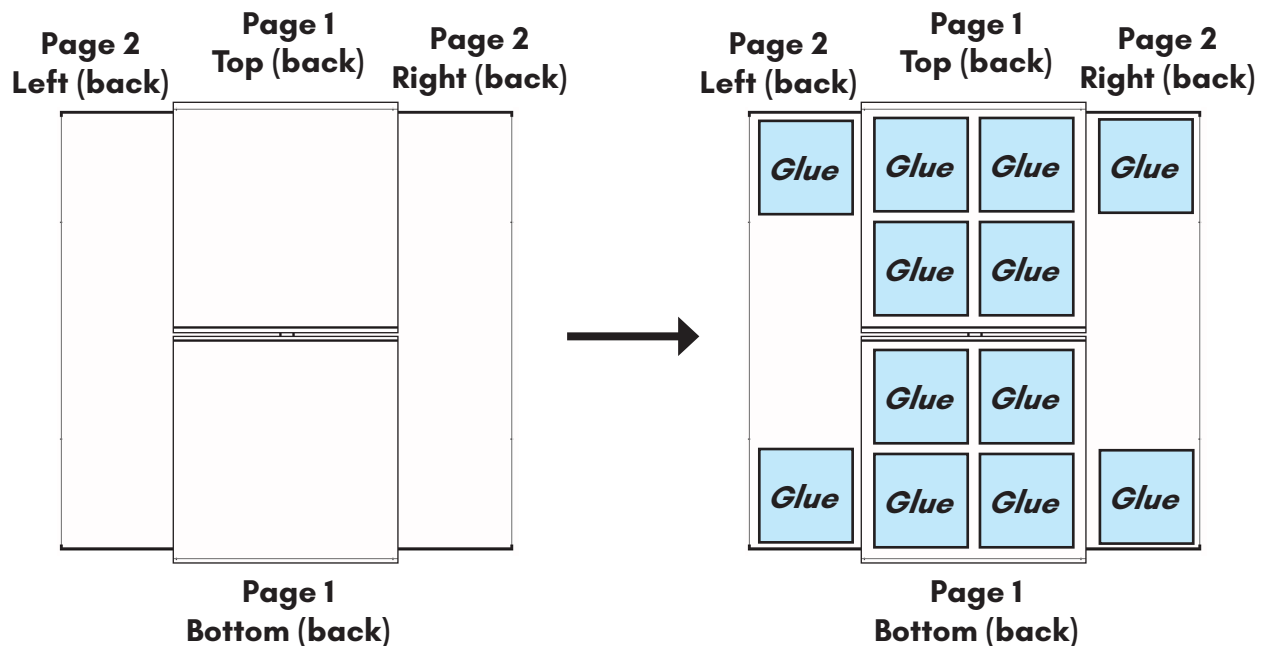
# Turn and Find - Blue - Instructions 5:

(4 page never-ending folding card)

Steps:

13 - Put glue on the 4 corner squares and the two large squares in the middle.

14 - Place page 3 pieces (top and bottom) on the glue (face up / numbers right side up in the outside corners).



# Turn and Find - Blue - Instructions 6:

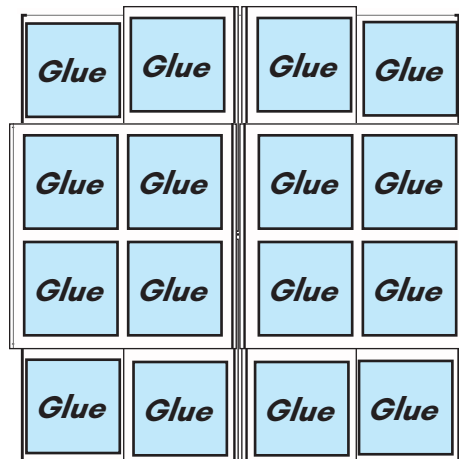
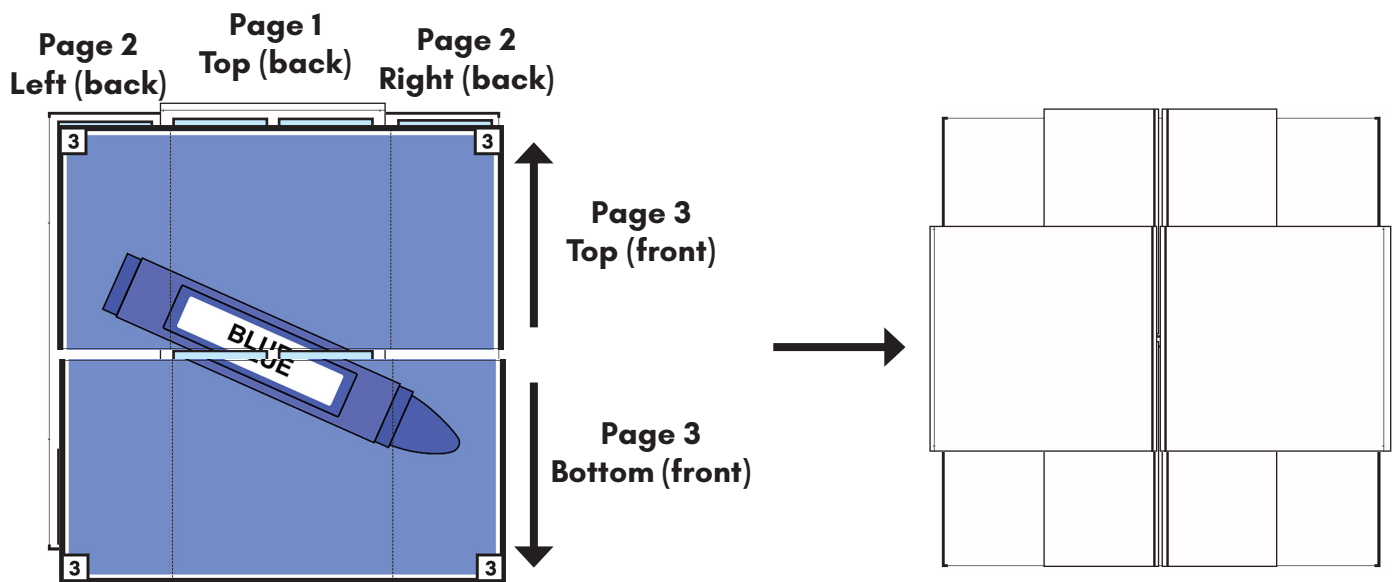
(4 page never-ending folding card)

**Steps:**

**15 - Turn the top piece of Page 3 up, over, and under (face down) along the fold lines.**

**16 - Turn the bottom of Page 3 down, over, and under (face down) along the fold lines.**

**17 - Put glue on all pieces.**



# Turn and Find - Blue - Instructions 7:

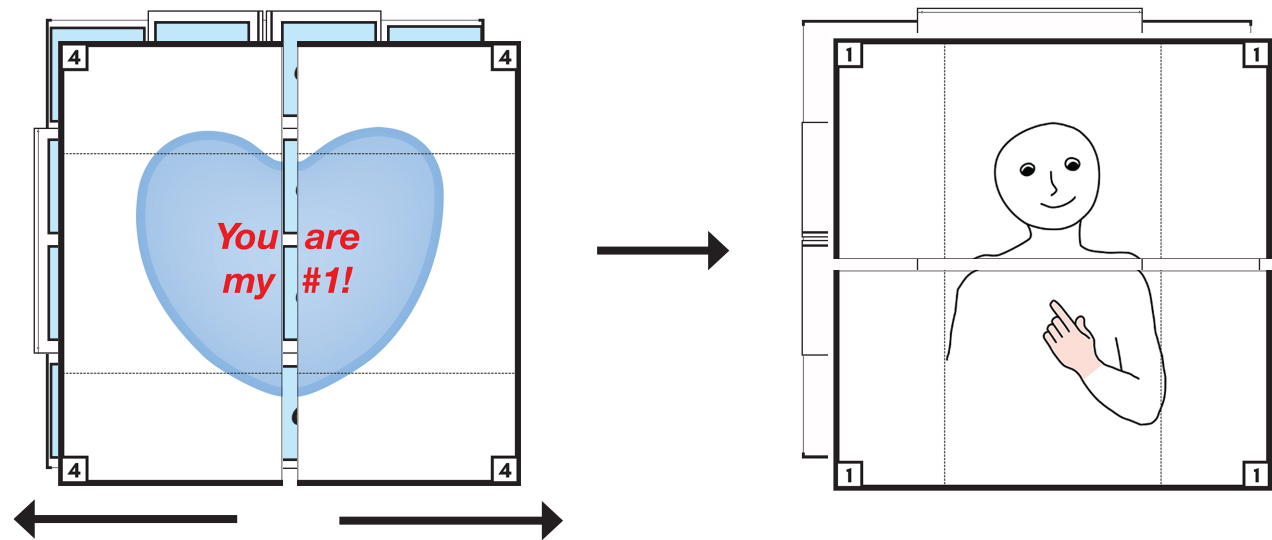
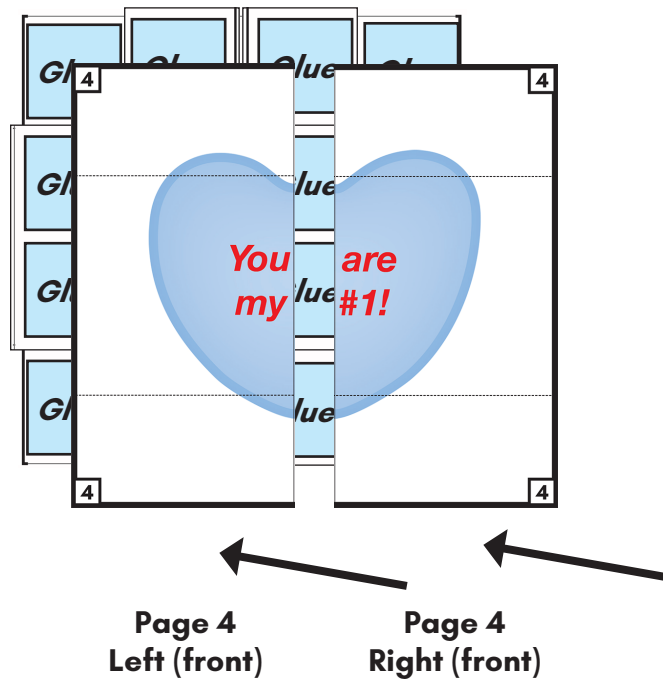
(4 page never-ending folding card)

Steps:

18 - Place Page 4 pieces (left and right) on the glue (face up / numbers right side up in the outside corners).

19 - When glue is dry, turn the Page 4 pieces (left and right) out, over, and under (along the fold lines).

20 - Always begin with Page 1 and numbers in the outside corners. Turn the pages to find out what is next!



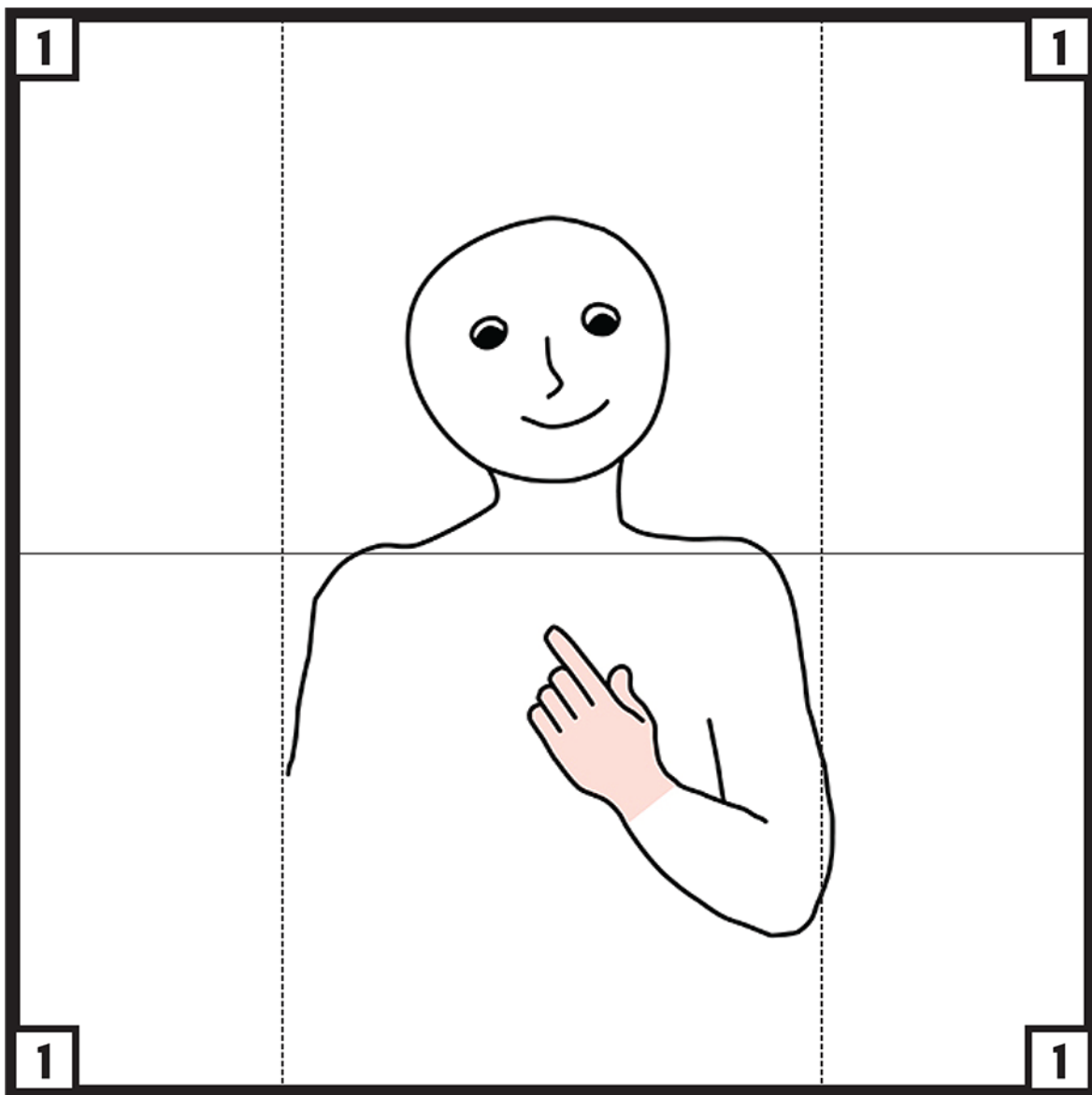
# Turn and Find - Blue - Print Page 1:

(4 page never-ending folding card)

Print and trim. Cut in half along cutting line. Fold the ends in on each piece using fold lines. Follow instructions for assembly.

## Valentines Day Candy Hearts-Blue

### Page 1



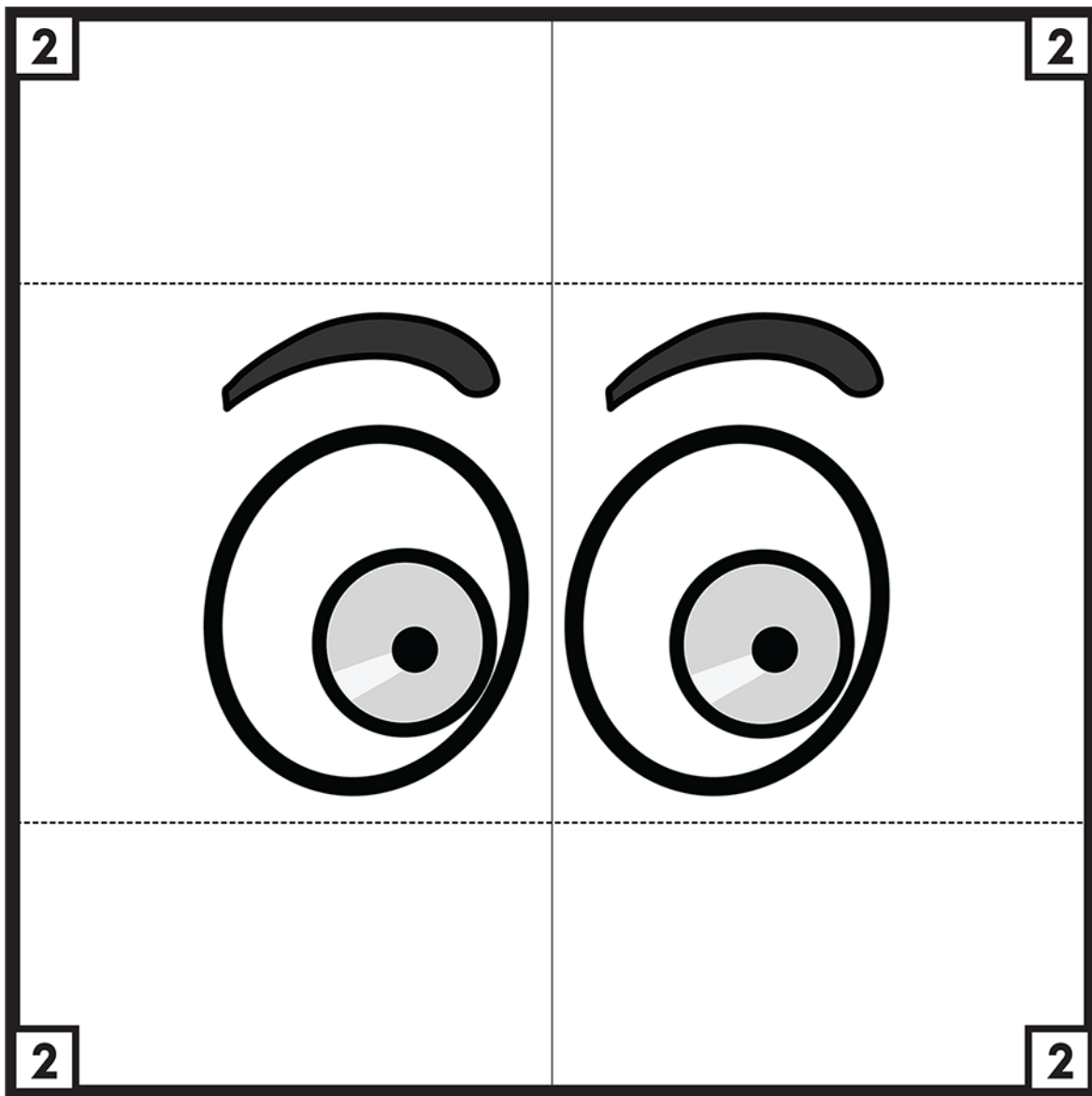


# Turn and Find - Blue - Print Page 2:

(4 page never-ending folding card)

Print and trim. Cut in half along cutting line. Fold the ends in on each piece using fold lines. Follow instructions for assembly.

## Valentines Day Candy Hearts-Blue Page 2

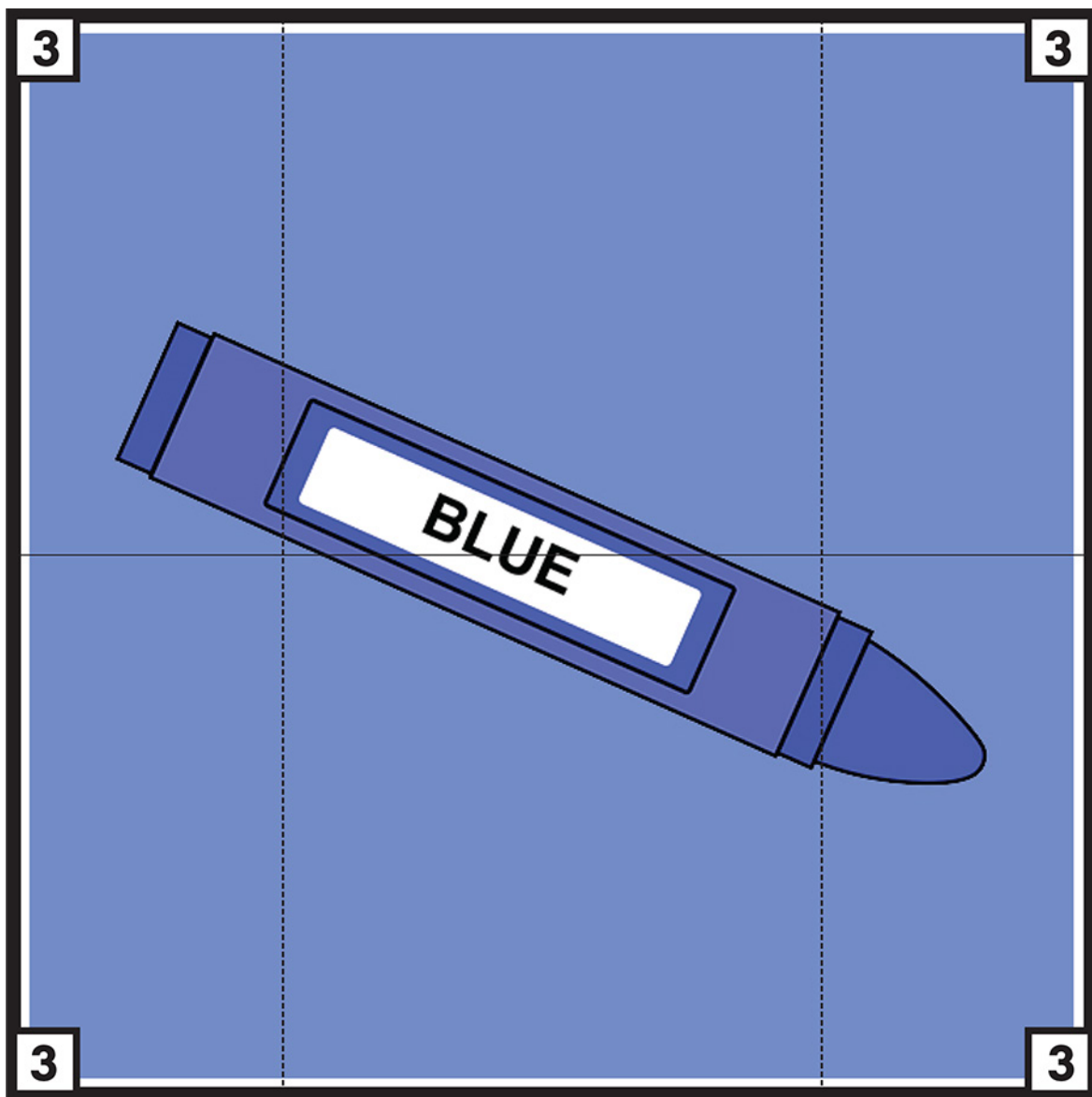


# Turn and Find - Blue - Print Page 3:

(4 page never-ending folding card)

Print and trim. Cut in half along cutting line. Fold the ends in on each piece using fold lines. Follow instructions for assembly.

## Valentines Day Candy Hearts-Blue Page 3



# Turn and Find - Blue - Print Page 4:

(4 page never-ending folding card)

Print and trim. Cut in half along cutting line. Fold the ends in on each piece using fold lines. Follow instructions for assembly.

## Valentines Day Candy Hearts-Blue Page 4

