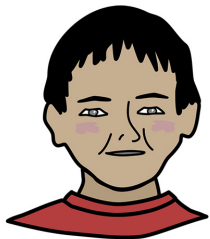
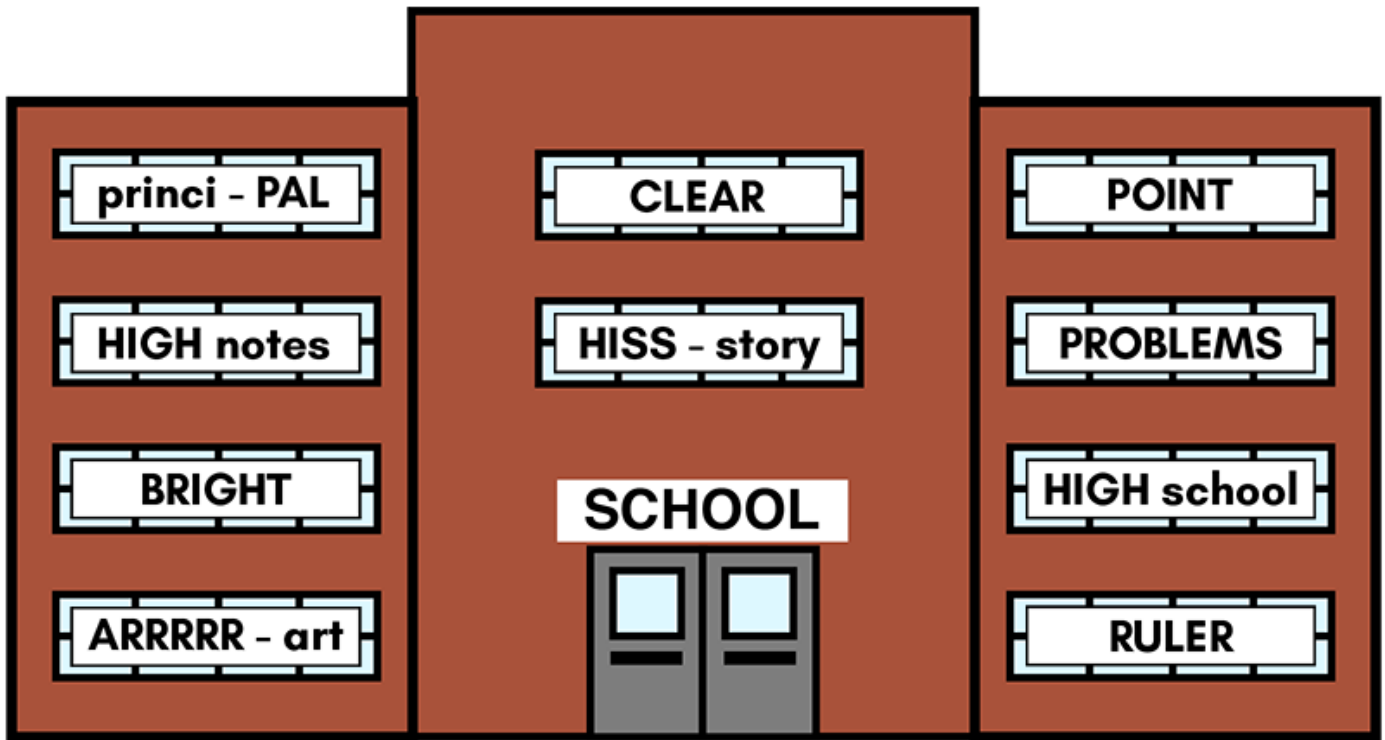


# Puns/Riddles - School - 1:

Can you guess?



I have a riddle for you!

Riddles are so silly!  
They make me smile!

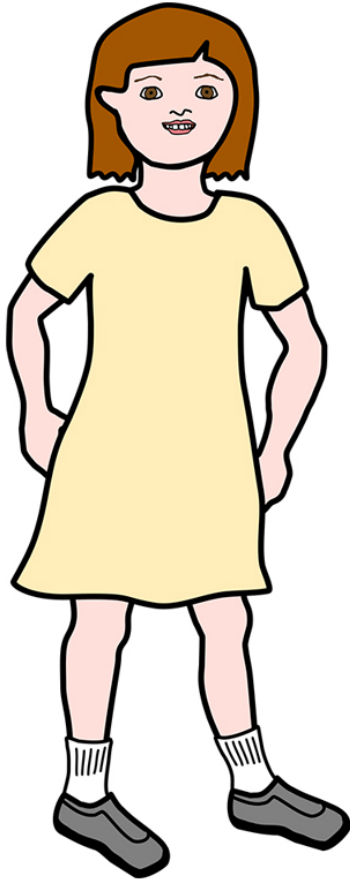


# Puns/Riddles - School - 1:

## Who is your best friend at school?

Donna?

---



**No! Think again.**

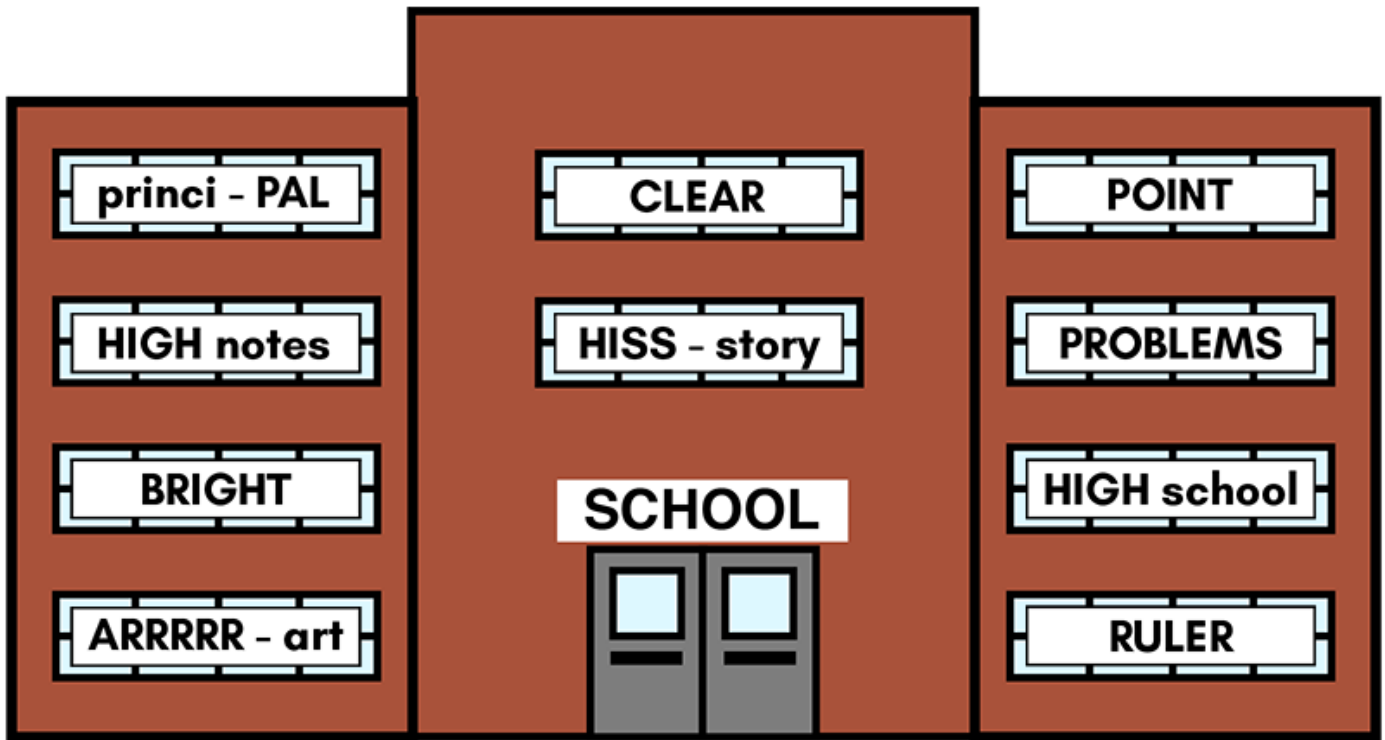
**Friend? PAL? Princi - PAL?**



# Puns/Riddles - School - 1:

Find the word **princi - PAL** in a window.

Circle that word.



**PAL! Princi - PAL!**  
**Your best friend is the Princi - PAL!**

**Princi - PAL?**  
**Like a friend?**



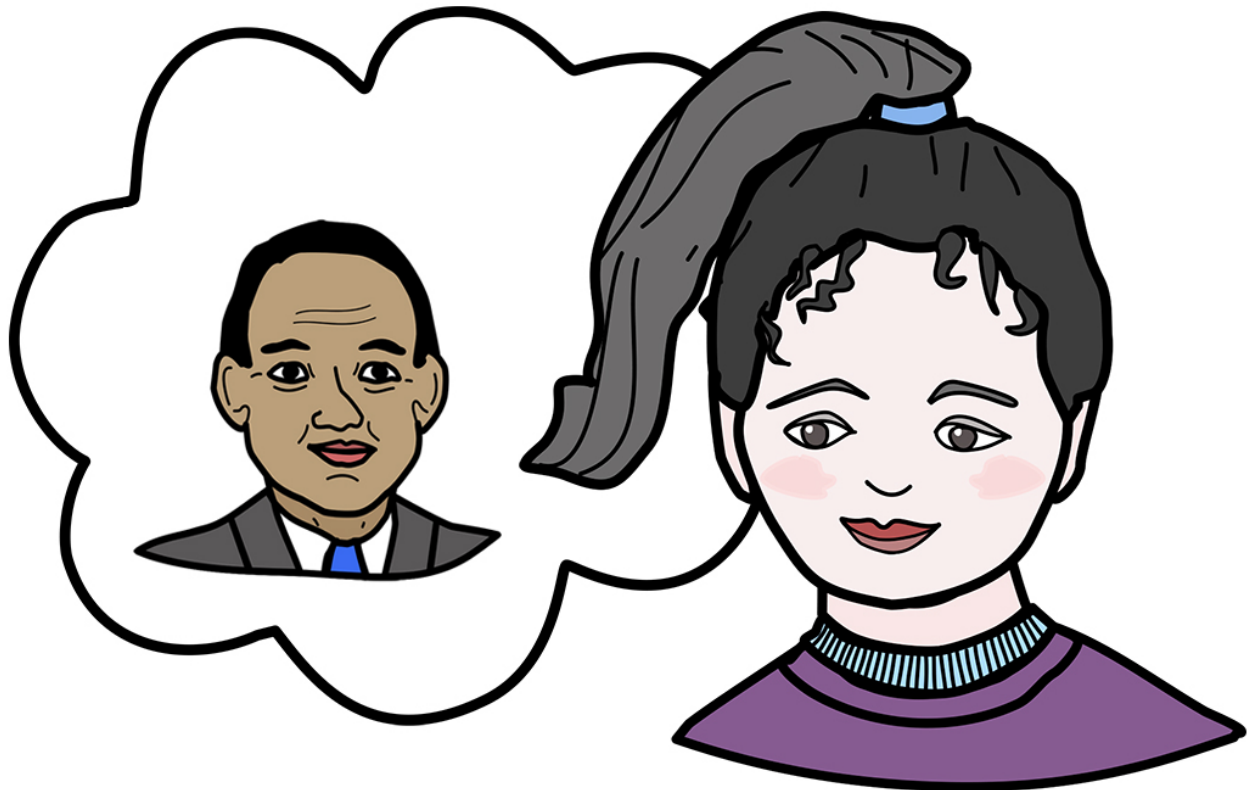
# Puns/Riddles - School - 1:

**Princi - PAL?**

**Your best friend at school is the "Princi - PAL"?**

**A funny way to say "friend"?**

---



**Yes, "princi - PAL".  
A funny way to say "friend"!**

**Saying "princi - PAL" is kind of funny!  
It is soooooo silly!**

